



Lingey House Primary and Nursery School

Newsletter 19 – 27th January 2023

NEU Industrial Action – Reminder

As I am sure you are aware, teacher members of the National Education Union (NEU) have voted to carry out industrial action and have announced their intention to strike.

They have named the following dates as planned strike days for our region:

Wednesday 1 February 2023

Tuesday 28 February 2023

Wednesday 15 March 2023

Thursday 16 March 2023

Many of our teachers are in the NEU and plan to follow their union's advice to strike.

I can confirm that on **Wednesday 1st February**, our school will be partially closed as follows:

Nursery (30 hours and 15 hours) – Closed

YRA and YRB - Closed

Y1A and Y1B – Closed

Y2A and Y2B – Open – Y2 children to attend as usual

Y3A and Y3B – Open – Y3 children to attend as usual

Y4A and Y4B – Closed

Y5A and Y5B – Closed

Y6A and Y6B – Closed



I understand that this will cause disruption to children and parents and that many of you will have to make alternative childcare arrangements. However, the decision to strike has not been taken lightly by our teachers. Once I have further information about staff's intentions on the other three dates, I will inform you.

Thank you for your understanding in this matter.

WhatsApp Groups

It has come to our attention this week that a number of children in our Year 5 and 6 classes are part of a WhatsApp group. While this is something that we don't want to discourage as it helps the children to socialize, there have been several reports of inappropriate content being shared in these groups, including sexual content, discussion of drugs, foul language and using names and images of Lingey House staff. While this is something that is happening outside of school, we have a duty of care to our children and staff and urge parents/ carers to check the content that your child has access to, particularly in these groups.





giving nature a home

EYFS Update

This week, the children in EYFS have taken part in the RSPB's 'Big Schools' Birdwatch'. Next week, the children in Key Stages 1 and 2 will be participating in the RSPB's 'Big Schools' Birdwatch'. The 'Big Schools' Birdwatch' is a simple bird survey, for pupils to take part in and enjoy together. This activity is about counting the



LINGEY HOUSE PRIMARY SCHOOL

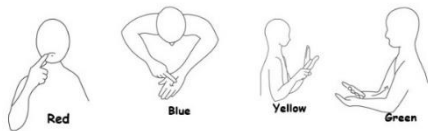
number of birds in our school grounds and the results also contribute to Big Garden Birdwatch – the world's largest wildlife survey. The children have enjoyed counting the birds, making bird feeders, reading the story of 'One Little Bird' and creating bird houses with junk modelling.



If you have any donations for our junk modelling areas in Reception and Nursery, we would be very grateful. Any clean recycling style items like cardboard boxes and empty food packaging, would be greatly appreciated. Thank you so much for all of your donations so far!



In Makaton next week we will learn how to sign the different colours of the rainbow.



Colours



The EYFS Team x

Beamish Museum- Worth a read!

This half term, our children in Year 5 have been asked to take part in an exciting project to celebrate the opening of the 1950s exhibit at Beamish Museum. As part of this, staff from the museum will be visiting school to deliver workshops to the children looking at life in the local area before and after Leam Lane Estate was built. The children will then have the opportunity to visit Beamish Museum to see the exhibit in person.

In addition to this, the museum has very kindly offered a fantastic opportunity for **all** of our families in school over half term! On Wednesday 22nd February, the museum has offered **discounted entry** to all families in school and **free coach travel** to and from the museum from outside of school. Look out for a letter in the next few days detailing how discounted tickets can be purchased and free coach travel can be booked!



'Big School's Birdwatch

Next week, the children in Key Stages 1 and 2 will be participating in the RSPB's 'Big Schools' Birdwatch'. The 'Big Schools' Birdwatch' is a simple bird survey, for pupils to take part in and enjoy together. This activity is about counting the number of birds in our school grounds and the results also contribute to Big Garden Birdwatch – the world's largest wildlife survey.



Quote of the Week



Thank you for your continued support and cooperation.

If you have any concerns or queries, please don't hesitate to contact me on 0191 4381287 or via email at: lingeyschool@gatehead.gov.uk

Best wishes,
Chloe Wilkinson
(Headteacher)

Let's Celebrate!

Attendance

Each week, the class with the best attendance will have an extra 10 minutes of playtime.

If any class has 100% attendance, they will have an ice cream/hot chocolate playtime!

Class	This week's attendance	Class	This week's attendance
YRA	97.5%	Y3B	98%
YRB	94.81%	Y4A	96.79%
Y1A	98.67%	Y4B	90.38%
Y1B	97.24%	Y5A	90.69%
Y2A	89.66%	Y5B	95.16%
Y2B	99.33%	Y6A	100%
Y3A	95.86%	Y6B	92.08%
Whole school attendance:		95.1%	

This week's Superstars

I would like to say a huge well done to all this week's superstars – watch out for their special certificate given out in Assembly! Our superstars for this week are as follows:



Year Group	Superstars
Reception	Lincoln S and Raine S
Year 1	Josh I and Jace S
Year 2	Amelia G and Penelope W
Year 3	Maddie F and Lacey G
Year 4	Emily S and Wyatt C
Year 5	Lucy Mc and Logan H
Year 6	Laila R and Jay T

Times Table Rockstars

	Most Minutes Played	Most improved speed
1st	Lewy I Y4B	Kacper M Y4B
2nd	Mia M Y4A	Lewy I Y4B
3rd	Rohat E Y5B	Riley W Y5A
Golden Guitar Winner		Y4B
Well done everyone!		



This week's House Tokens

This week's winner is Warkworth!



<u>Bamburgh</u>	160
<u>Hylton</u>	155
<u>Warkworth</u>	170
<u>Lumley</u>	160
<u>Dunstanburgh</u>	140
<u>Alnwick</u>	85